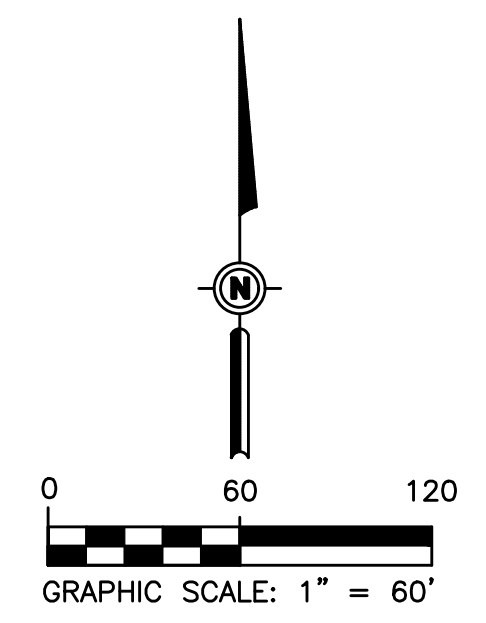
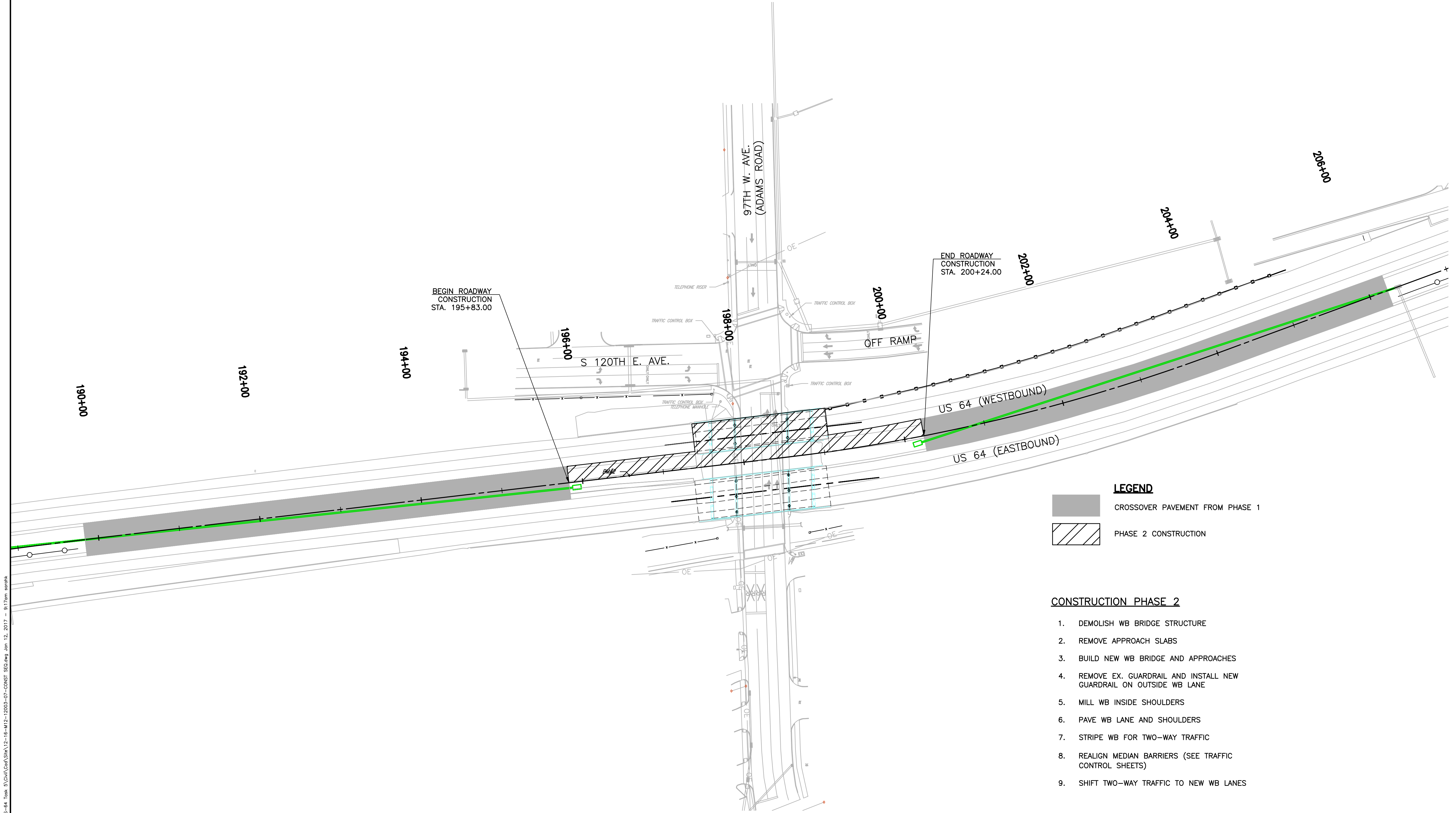


REVISIONS		
REV. NO.	DESCRIPTION	DATE



**LEGEND**

	CROSSOVER PAVEMENT FROM PHASE 1
	PHASE 2 CONSTRUCTION

- CONSTRUCTION PHASE 2**
1. DEMOLISH WB BRIDGE STRUCTURE
  2. REMOVE APPROACH SLABS
  3. BUILD NEW WB BRIDGE AND APPROACHES
  4. REMOVE EX. GUARDRAIL AND INSTALL NEW GUARDRAIL ON OUTSIDE WB LANE
  5. MILL WB INSIDE SHOULDERS
  6. PAVE WB LANE AND SHOULDERS
  7. STRIPE WB FOR TWO-WAY TRAFFIC
  8. REALIGN MEDIAN BARRIERS (SEE TRAFFIC CONTROL SHEETS)
  9. SHIFT TWO-WAY TRAFFIC TO NEW WB LANES

V:\M12\2012\2005-07\_0005\_EC-1414\_US-64\_Bridg\_3\CAD\CADD\Sheet\2-16-M12-2005-07\_CONSTR\_2005.dwg, Job: 12, 2017 - 9/17/2017

DESIGN		DGS	11/16	TULSA COUNTY		US-64 OVER 97TH W. AVE.	
DRAWN		SDK	11/16	OKLAHOMA DEPARTMENT OF TRANSPORTATION			
CHECKED		HRA	11/16	<b>CONSTRUCTION PHASING (PHASE 2)</b>			
APPROVED							
WALTER P MOORE				STATE JOB NO. 28884(04) SHEET NO. 14			